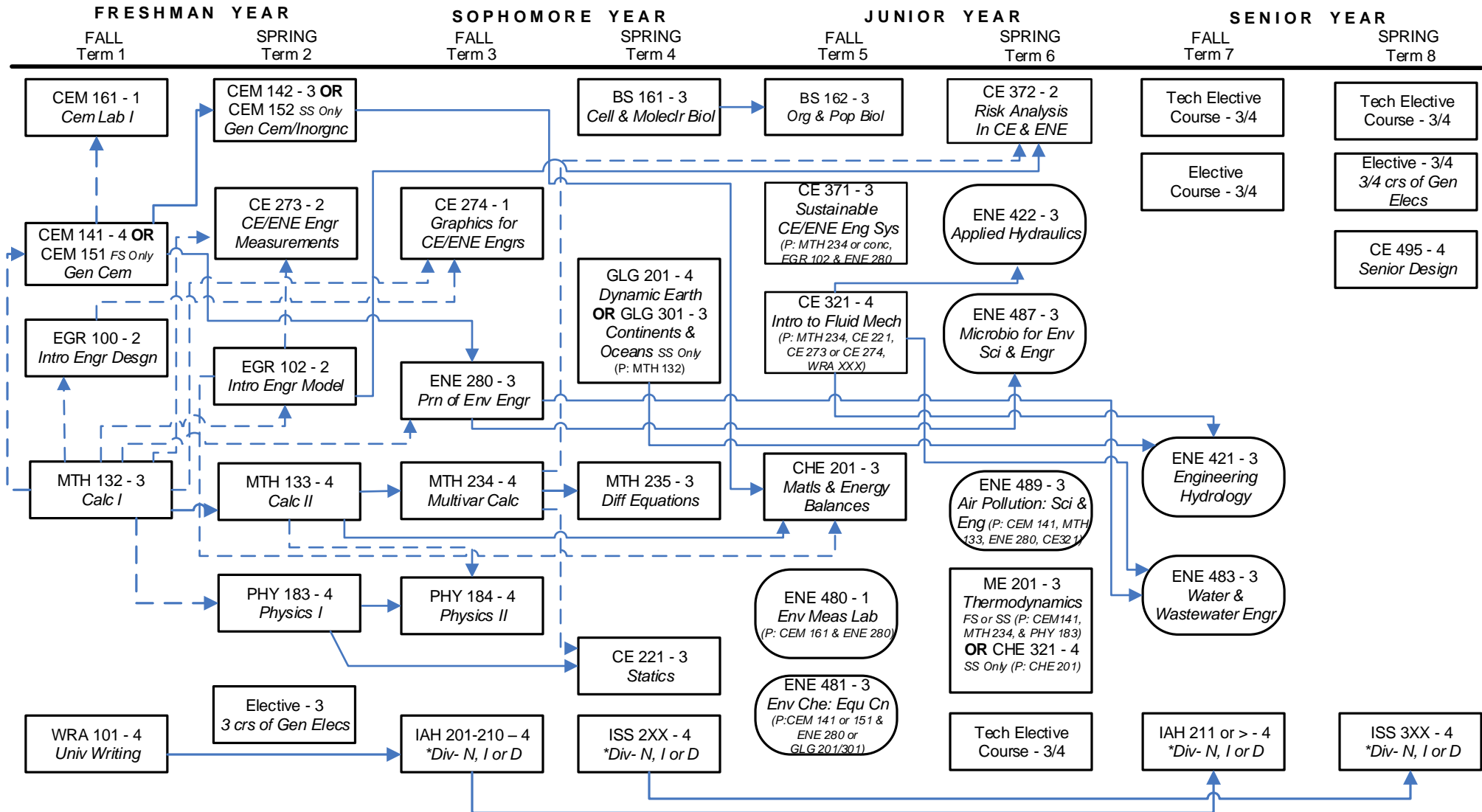


# Environmental Engineering

## Prerequisite Flowchart

These requirements are effective for students admitted to the Environmental Engineering major beginning Fall 2016.



**LEGEND**

- Prerequisite
- - - - -> Prerequisite or Concurrent
- Rounded box: Offered only in the semester listed (excluding summer)
- \*Div- Complete courses in at least 2 out of 3 diversity categories: "N", "I" or "D"

Last Revised: 02/27/17