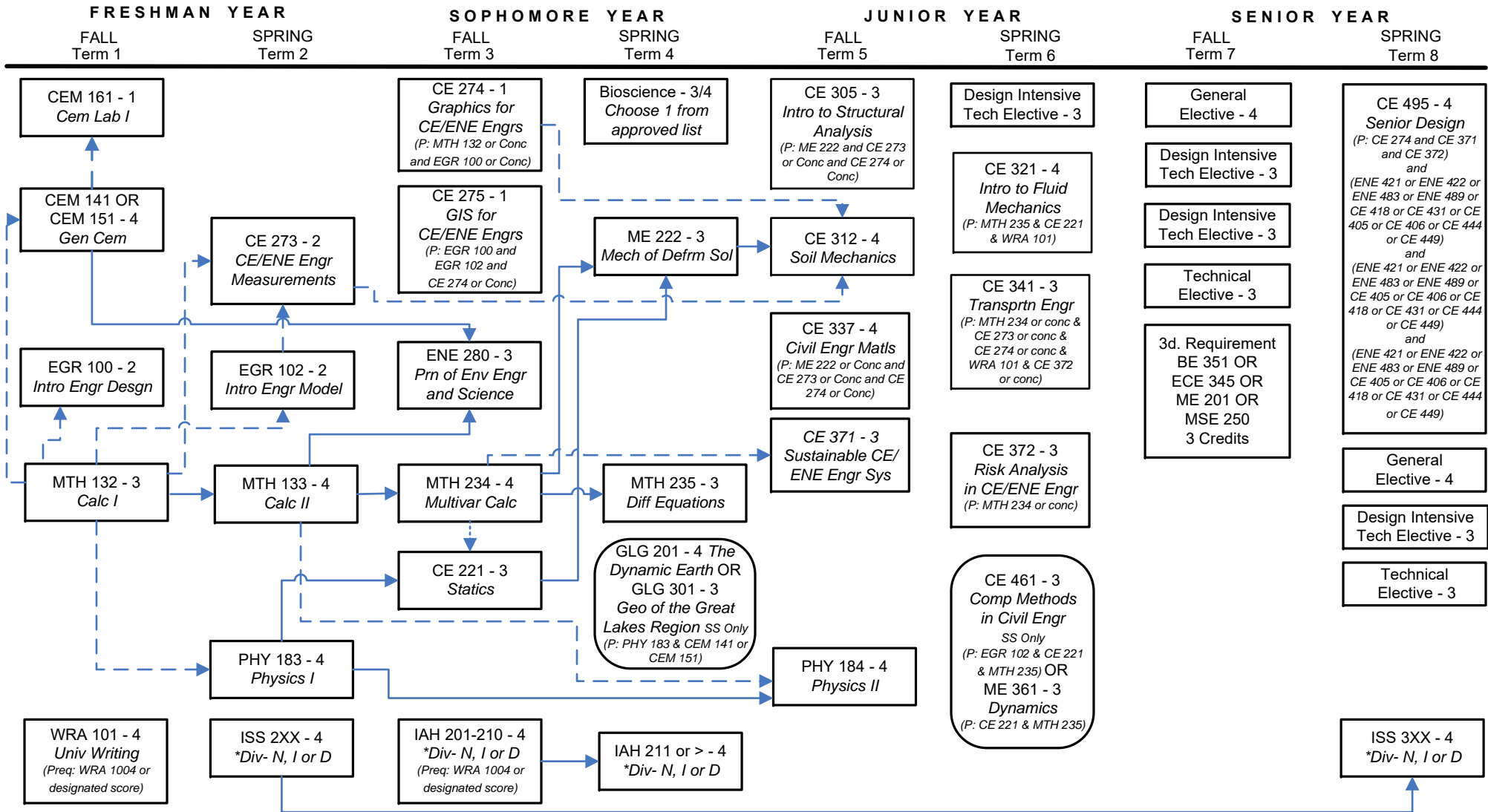


Civil Engineering

Prerequisite Flowchart

These requirements are effective for students admitted to the Civil Engineering major beginning Fall 2021.



LEGEND

- Prerequisite
- - - - - Prerequisite or Concurrent
- Rounded box: Offered only in the semester listed (excluding summer)
- *Div- Complete courses in at least 2 out of 3 diversity categories: "N", "I" or "D"

Last Revised: 06/07/2022