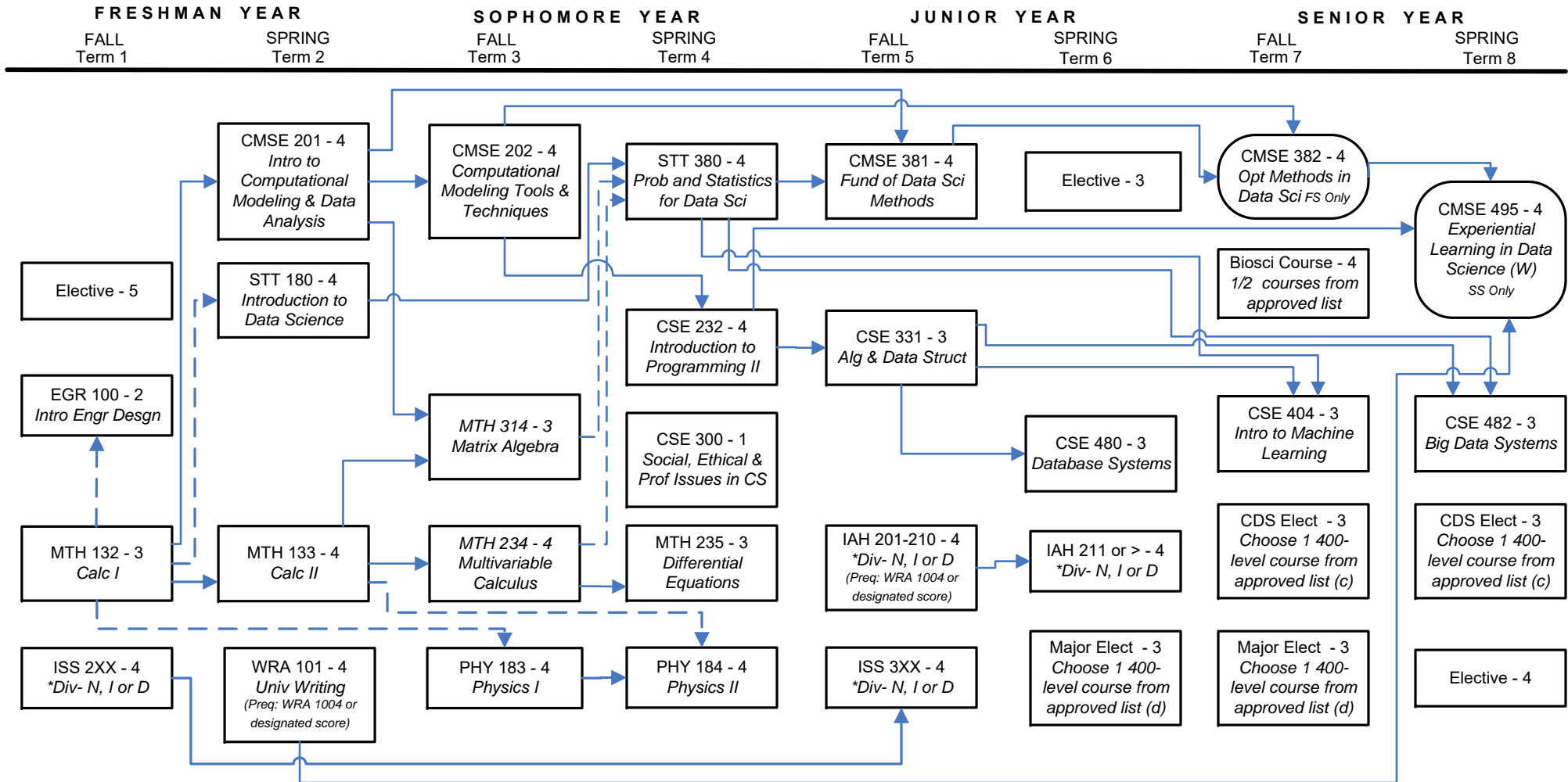


Computational Data Science

Requirements and Program Flow

These requirements are effective for students admitted to the Computational Data Science major beginning Fall 2020.



LEGEND

- Prerequisite
- - - - -> Prerequisite or Concurrent
- Rounded box: Offered only in the semester listed (excluding summer)
- *Div: Complete courses in at least 2 out of 3 diversity categories – “N”, “I” or “D”