



Michigan State
University
Community Club
2022-2023 Newsletter



**SPARTAN
STRONG**

A Message from Your Co-Presidents

Our beloved campus is in grief because of the senseless violence on February 13. At our Club's meeting on Friday, February 17, the suggestion was made that we find a way to support the five students who were injured in the shooting. The Scholarship Committee and the Board are working to implement this proposal. Watch for a news blast about this soon!

Our quilting group has been making fabric hearts which they are tying on trees all over campus to show our love for all University students, and all members of the Club are sending support to the families of the student victims.

Our fervent hope is for healing over the next few weeks and months. We are and we must remain **Spartan Strong**.

*Kathy Jacobs and Joy Jacobs
MSUCC Co-Presidents 2022-2023*

~ ~ ~ ~ ~

Dates to Remember

Monday, March 13

Board Meeting, 10:30 AM to 12 noon
Community Room, MSUFCU, corner of Mount Hope and Farm Lane

Friday, March 17

General Membership Meeting and Program, 1:00 to 3:00 PM
Community Room, MSUFCU, corner of Mount Hope and Farm Lane
See page 6 for program information

Monday, April 10

Board Meeting, 10:30 AM to 12 noon
Community Room, MSUFCU, corner of Mount Hope and Farm Lane

Thursday, April 20

"Daffodils" Spring Luncheon, 12:00 to 2:00 PM (doors open at 11:30 AM)
University Club Ballroom (lower level), 3435 Forest Road, East Lansing
Information and the reservation form are on pages 2 and 3

MSU Community Club Response to the Tragedy of February 13

GoFundMe Accounts

You may have missed the “news flash” sent out on Sunday, February 19, in which several links were given where members can donate in response to requests from the MSU Spartan Strong Fund and several GoFundMe accounts for students who died or were wounded in the shooting. Several more GoFundMe accounts have been set up since the “news flash” was sent. Here is a link to all verified GoFundMe accounts related to the MSU shooting:

<https://www.gofundme.com/c/act/michigan-state-shooting-help>

MSU’s Spartan Strong Fund *(this is an MSU account, not a GoFundMe account)*

The University’s Spartan Strong Fund website says “While MSU is covering hospital bills for the injured students, the Spartan Strong Fund has been created to provide support for the evolving needs of the individuals most critically impacted.” The fund “will be used to address the immediate and changing needs of Michigan State University. Examples of support will include the medical bills for wounded students, and could include campus safety enhancements and mental health services for our students, faculty, and staff”. Find the fund at

www.givingto.msu.edu/spartan-strong.cfm

Quilters Showing Love to Students

Mary Andrews and friends have been making dozens of quilted fabric hearts which they’ve been tying to trees on campus, intending for students to take them to keep. Mary has also given hearts to the Olin Health Center counselors to distribute to students who come in, and to the main library, which is now the home of the former Berkey Hall classes. The fabric hearts are all different, and are all beautiful. Hopefully, our students will see them as reminders that the greater community loves them and hopes for their healthy healing.



The Spring Luncheon



The Annual Spring Luncheon of the MSU Community Club will take place at noon on April 20, in the University Club Ballroom. In recognition of the 100 years our club has been in existence, the theme for the event is “A Century of Service and Friendship”. During the program we will honor all past Presidents of the club in recognition of their service. The program will also feature longtime member and former MSUCC President Karen Harsh, who led the “Taste of the Town”

events that enabled our scholarship endowment. She will be giving a talk on the history and highlights of the club’s 100 years.

More information, the menu, and the registration form are on the next page. The reservation deadline is March 31.



MSUCC Annual Spring Luncheon
Thursday, April 20, 2023

Please reserve before March 31 by completing this form and mailing it with your check to: **Kathy Lovell**

6185 Graebear Trail

E. Lansing, MI 48823

Name _____

Address _____

Phone number _____

Special Dietary Needs _____

Cost for the luncheon: \$30 per person. Please make your check to MSU Community Club.

Guests are welcome (and encouraged!). Please include names and payment for lunches.

Guest Names _____

MENU

Mixed Greens Salad with Toasted Almonds and
Mandarin Orange Slices
Served with Raspberry Vinaigrette Dressing
Sautéed chicken breast topped with diced tomato, red
onion, basil, fresh mozzarella, &
a balsamic Blanc sauce
Red skin potatoes with chive butter
Warm rolls and butter, Steamed Broccoli



Report of the General Membership Meeting on February 17

Master Chocolatier Konstantin Zsigo is shown here demonstrating how to make an orange ganache, which we all sampled at our general membership meeting on Friday, February 17, at headquarters building #2 of the MSU Federal Credit Union.



Konstantin brought with him a hot plate, saucepan, the ingredients he needed to make this treat, and his lovely wife Nikki, who assisted him. He also shared samples of his salted caramel candies, talked about the different kinds of chocolate, and answered many questions.



This was our annual business meeting, at which we elected the Executive Board and introduced the appointed Board members for the 2023-2024 Club year. Treasurer Gretchen Forsyth gave the financial report for the last fiscal year (2021-2022), and we discussed what the Club might do to help the students who were injured by the mass shooting on campus on Monday prior to the meeting.

Despite the sad news we discussed during the business meeting, we enjoyed Konstantin's presentation. He was personable, funny and informative. Over 30 members and guests attended and we all enjoyed gathering together. Our refreshments were supplied by the First Friday Dinner & Bridge interest group.

The chart below shows our elected and appointed Board members for 2023-2024. According to our By-Laws, the fiscal year starts August 1, and ends July 31. Out-going and in-coming Board members will be introduced and thanked at the Spring Luncheon on April 20.

All positions except one have been accepted by members who will serve the Club starting August 1, 2023. The open position of Membership Chair would involve recruiting and retaining members and ensuring that dues payments are received and recorded (in cooperation with the Treasurer). If you are interested in this position or can suggest someone else who might be, please contact President-Elect Lyn Farquhar.

MSUCC Board - 2023-2024

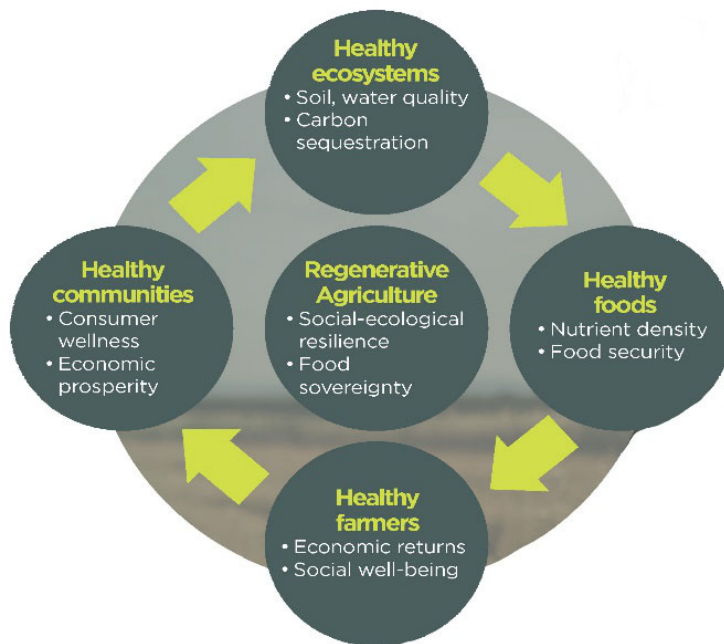
Position	Name	Email address	Phone #
President	Lyn Farquhar	farquha1@msu.edu	290-0016
Co-First Vice Presidents	Nancy Craig Jan Quiring	craign@msu.edu janquiring@msn.com	351-1391 282-3215
Second Vice President	Kathy Esselman	esselmank@comcast.net	351-0417
Recording Secretary	Kay Hillberg	hillbergk@hotmail.com	881-4298
Corresponding Secretary	Joanne Keith	keith@msu.edu	349-5977
Treasurer	Gretchen Forsyth	forsythgretchen@gmail.com	332-6683
Assistant Treasurer	Helen LeBlanc	helen_48895@yahoo.com	655-6454
Board Advisors	Kathy Jacobs Joy Jacobs	khjacobs@hotmail.com jacobsj@msu.edu	243-4303 675-5590
Membership Chair			
Interest Group Chair	Jacque Foss	fossjk@gmail.com	324-9991
Endowed Scholarships Co-Chairs	Jacqueline Holecek Mariellyn Stevenson	jdholecek@hotmail.com mariellyns@yahoo.com	290-4322 420-3426
Greeters	Phylis Floyd Dottie West	floyd@msu.edu westdoro@gmail.com	980-2526 482-9844
Program Co-Chairs	Kathy Jacobs Joanne Schutz	khjacobs@hotmail.com jajoschutz@gmail.com	332-2737 285-3969
Registrar	Janet Brock	jpbrock@mac.com	292-7873
Parliamentarian	Cele Friestater	cfriestater@tuchinsky.org	337-7474
Historian/Photographer	Kathy Esselman	esselmank@comcast.net	351-0417
Publicity	Linda Nuttall	nuttall.linda@gmail.com	282-5408
Webmaster	Ruth Ann Stump	stumpr@gmail.com	449-0841
Newsletter Editor	Joy Jacobs	jacobsj@msu.edu	675-5590
Chair of the 2023 Big Ten Women's Club Conference	Joy Jacobs	jacobsj@msu.edu	675-5590

Our Next General Membership Meeting - March 17



We will be back at the Farm Lane and Mt. Hope MSU Federal Credit Union Community Room for our March 17 general membership meeting. The meeting will begin at 1:00 PM and end by 3:00 PM.

Our program will be presented by Jason Rowntree, PhD, who is an associate professor in the Department of Animal Science, College of Agriculture and Natural Resources. He will explain “What is Regenerative Agriculture?” and answer questions from members and guests attending.



Interest Group News for March

Afternoon Bridge - Chair Kay Hillberg

hillbergk@hotmail.com 881-4298

We will play in March on the 13 & 27. If you are on the current list, I will send an eMail reminder early in the week before our playdate. If you are not on the list but would like to play, we would love to have you join us; please contact me. We continue to play online using Bridge Base, however, I'm asking for input about your preference going forward. Do you prefer on-line or in-person, or do you have no preference?



Kay

Creative Writers - Chairs Kathy Esselman

esselmank@comcast.net 974-1834

Lyn Farquhar

farquha1@msu.edu 349-9569

Three of the MSUCC Creative Writer's have recently published books!

Jill Campbell Mason published The Elephant in the Room, an exotic suspense story set on the remote island of Sumatra. Thinly veiled issues of social justice, equality, greed, and saving the planet reveal themselves as you read. A Literary Titan award-winner for 2022.

Lyn Farquhar's book (penname Lyn Farrell) In the Frame, published by Epicenter Press, came out in January, 2023. This mystery is the third in the Rosedale Investigations series. The team investigates the case of a missing woman and follows the trail of owners for a century-old painting that is considered to be cursed which puts the lives of two team members at risk.

Joyce Benvenuto's most recent book, The Road to Duncan, gives us poems about her father who was a hobo in the 1920s.

Jill's book cover	Lyn's book cover	Joyce's book cover

Kathy and Lyn

Dinner & Bridge - Chair Joy Jacobs

jacobsj@msu.edu 675-5590

This couples & singles group meets the first Friday of the month at the University Club for dinner at 5:30 PM, followed by playing bridge in one of their private rooms. We next meet on Friday, March 3.

jj



Evening Novel Discussion - Chair Janet Brock jpbrock@mac.com 292-7873
We'll next meet Wednesday March 8, at 7:30 PM on Zoom. If you would like to join us, contact me to find out what we're reading and to get the Zoom link.
Janet



Family Links - Chairs Candy Boldrey cbold67@gmail.com 859-421-0014
Sandy Gebber sanrosgeb@gmail.com 351-9318
Our March 21 meeting is at the East Lansing Public Library. This will be a "help each other or do your own research" meeting.
Sandy and Candy



German Conversation - Chair Helen LeBlanc helen_48895@yahoo.com 655-6454
We meet at 2:00 PM the first and third Thursdays. The meeting on the first Thursday is by Zoom, because our membership ranges from California to southern France. On the third Thursday we meet in member's homes and share wonderful desserts. We converse only in German, and discuss topics from politics to current movies. Contact me if you are interested.
Helen



Golf - Chair Kristi Broessel filfour@aol.com 323-8286
The golf league finished its 2022 season in September, with perfect weather, a nine hole scramble, a luncheon, and prizes. We hope to see all 36 member golfers back in Spring 2023, and we encourage members who golf to consider joining us. You'll see news from us again in the Spring!
Kristi



International - Jean Friend Jean@friend.jean.net 285-5469
Planning for the revitalization of the group starts Wednesday, April 19, 2:00 PM, with an English Tea in my home. All those who signed up at the September meeting will be invited. If you did not sign up at that time, please contact me for details.
Jean



MahJong - Contact Kathy Jacobs khjacobs@hotmail.com 332-2737
Vivian Dwyer hosts her classes at Arty Party in Okemos, and will start teaching another group for us on March 6. To sign up for future lessons, please contact Vivian at Paintviv@comcast.net or 881-4203. Kathy



Morning Eclectic Readers - Chair Babs Krause krauseb02@comcast.net 337-2713
We meet on the fourth Friday via Zoom at 10:00 AM. Our March 24 book is D-Day Girls by Sarah Rose.
Babs



Out-to-Lunch Bunch - Chair Kathy Esselman esselmank@comcast.net 974-1834
We will meet on Friday, March 10, at 11:30 AM. Willa Schwartz has made reservations at Sansu Sushi and Cocktails at 4750 Hagadorn Rd #100 in Hannah Plaza, East Lansing. The menu is available at <https://sansu-sushi.com>



If you would like to join us for lunch, please call Willa at 517-351-2690 or email her at willa.swarts@comcast.net Many thanks to Willa for organizing this luncheon.
Kathy

Social Outings - Contact Kay Hillberg hillbergk@hotmail.com 881-42980
(formerly Social Singles)

This group hasn't met since the pandemic, and we are working to re-start, brainstorming ideas such as eating at local restaurants; attending concerts, plays or special events; doing craft projects; or visiting interesting places in or near Lansing. Please contact me if you have questions or suggestions.
Kay



Spartan Quilters - Chair Martha Schwab mmschwab17@gmail.com 676-7011

This group started in the early 1980s, and has progressed as quilting technology has evolved. We meet the first and third Wednesdays at Country Stitches, starting at 9:30 AM and ending before noon. We do not do any sewing at the meetings (no need to bring your sewing machine) but we demonstrate and learn new and traditional quilting techniques and share ideas. We will continue with a small new project or Quilting Tips & Techniques at each meeting for the rest of the year. Join us!
Martha



Tennis - Chair Phylis Floyd floyd@msu.edu 980-2526

The tennis drill group is pretty routine - one-hour drill sessions at Court One East on Research Drive off Okemos Road at 9:00 AM Mondays & Fridays. Players can play either or both days, and all skill levels are welcome. Members of Court One pay \$9.00 a session; non-members pay \$10.



Sessions happen when four people sign up! To assure we have enough players and courts each time we meet, please call the club the day before (517-349-1199) and let the receptionist know you are reserving a spot with the MSU Community Club. If you are not currently a member of Court One, the first time you play you will need to complete some safety papers.
Phylis

Women's Night Out - Ellen Dohr dohrlove@comcast.net (c)927-8809 (h)349-9423
Continuing with our International theme, the March 22 WNO will be at Ozzy's Kabob <https://ozzyskabob.com/> at Meridian Crossings in Okemos at 6:00 PM. Jean Zwier will be emailing the group in the next week or so, prior to making a reservation.
Ellen



Women's Sports Supporters - Chair Joy Jacobs jacobsj@msu.edu 675-5590
The basketball team's season closed with Senior Night on Wednesday, February 22. Next is the Big Ten Basketball Tournament in Minneapolis. The bracket has yet to be set. Some of the tournament games will be shown live on the Big Ten Network or on Big Ten Plus. Games start Wednesday evening, March 1 and end with the tournament championship game on Sunday, March 5.



The gymnastics team had their fourth best score in program history in their win at Penn State on February 4. The next weekend at Iowa they won three event titles and the all-around title, but lost the meet by only **.325 point!** Their meet on February 17 was postponed. Here's a link to their schedule:



<https://msuspartans.com/sports/womens-gymnastics/schedule>

Let me know if you want to be on the Women's Sports Supporters email list, and I'll send competition information and the women's Spring sports schedules as they are available.
jj



If you have an idea for a new interest group, please get in touch with Kay Hillberg at hillbergk@hotmail.com or at 349-2472 or with Barb Tanaka at balyoggol@gmail.com or at 899-5835

MSUCC members are eager to join together for good times and fellowship, and they are interested in many different ways to do so. New interest groups give us more opportunities to meet more friends and to have more fun!

