

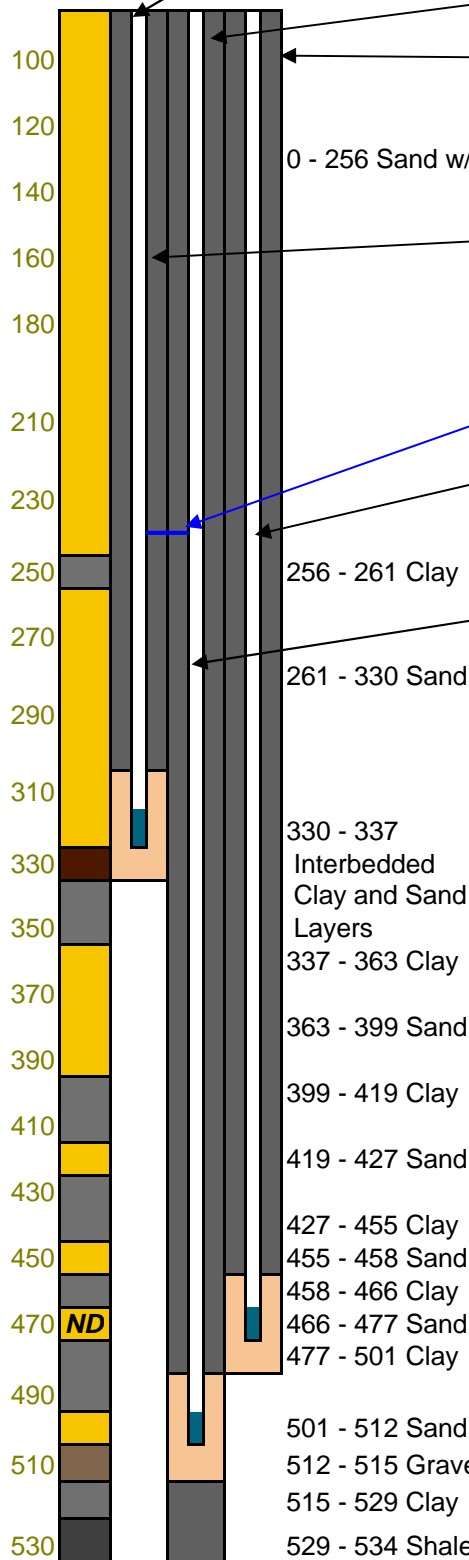
Wickes Manufacturing Site TCE Plume (Mancelona-Cedar River TCE Plume)

Preliminary Investigation Results & Monitoring Well Construction Summary

Location 'MW-65' - Installed by Dura 2001

Location 'MW-65-CRWF' - Completed 6/30/2006

Location 'MW-65 d' - Completed 7/19/2006

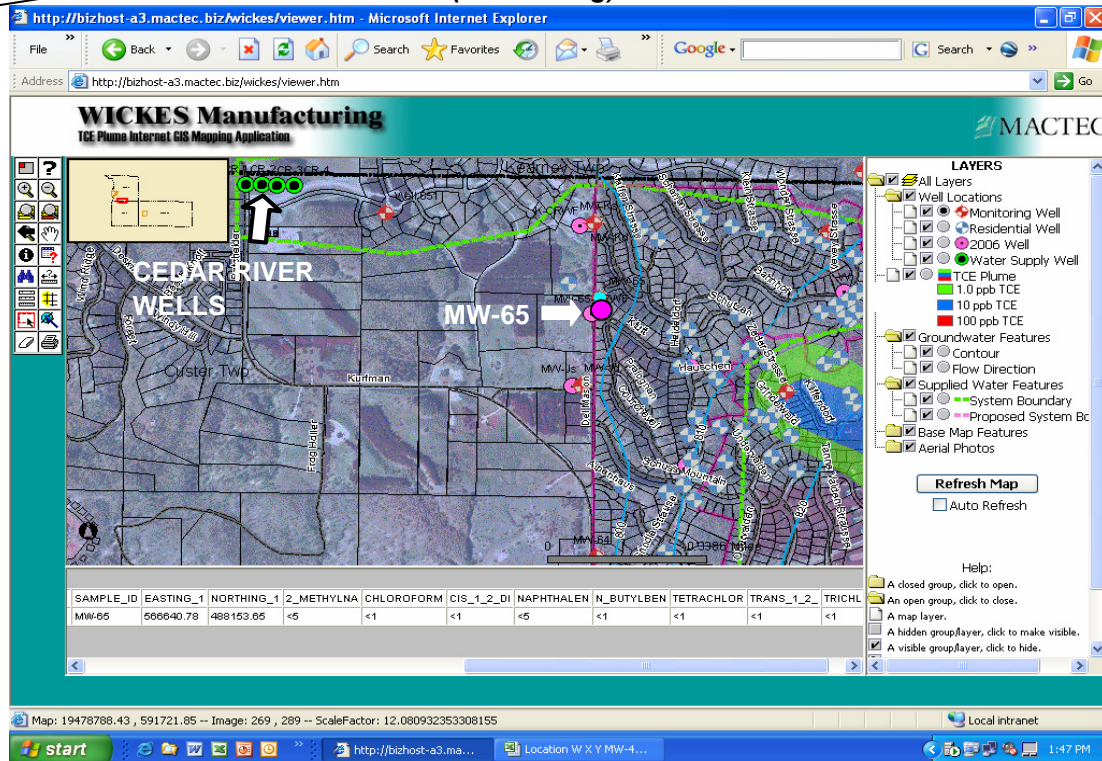


2-inch ID, Galvanized Steel Monitoring Well with a 10-foot-long, Stainless Steel Well Screen

Water Table at 244 Feet Below Grade (fbg)

Monitoring Well MW-65d
Screened Interval (465-475 fbg)

Monitoring Well MW-65-CRWF
Screened Interval (502-512 fbg)



[MDEQ Web Page Link](http://bizhost-a3.mactec.biz/wickes/viewer.htm)

<http://bizhost-a3.mactec.biz/wickes/viewer.htm>

(Click Link Above)

(for Interactive Project Viewer)

Key Findings:

- 1.) Location is outside current water service area.
- 2.) Clay confining units observed separating water bearing units.
- 3.) Location is down gradient of the leading edge of the TCE Plume.
- 4.) Only one groundwater sample was collected during well installation activities. Monitoring Wells MW-65d and MW-65-CRWF will be sampled during quarterly groundwater sampling at the end of August 2006.