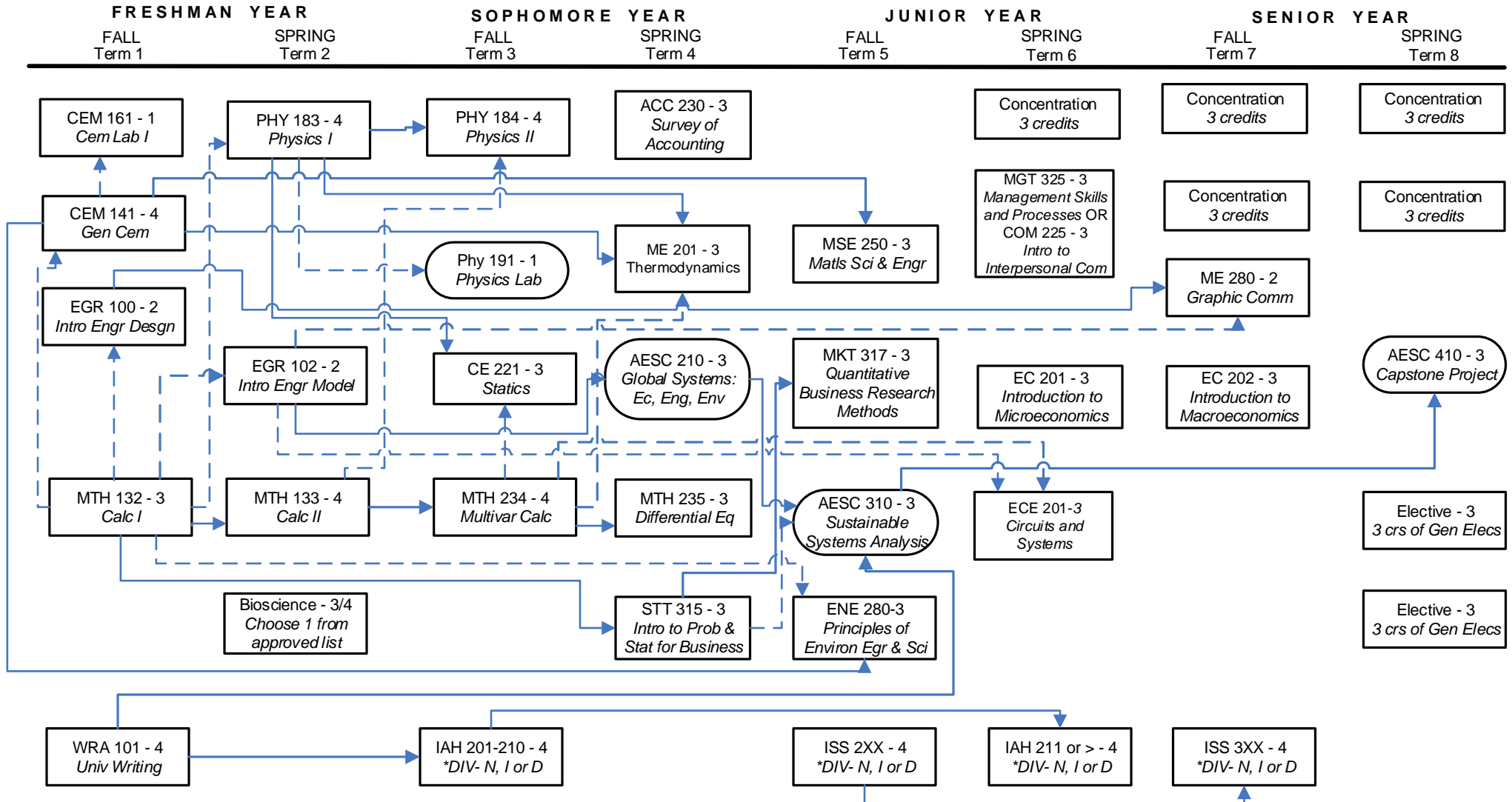


# Applied Engineering Sciences

## Prerequisite Flowchart

These requirements are effective for students admitted to the Applied Engineering Sciences major beginning Fall 2017.



**LEGEND**

—————> Prerequisite      - - - - -> Prerequisite or Concurrent

Rounded box: Offered only in the semester listed (excluding summer)

\*DIV: Complete courses in at least 2 out of 3 diversity categories- "N", "I" or "D"