

2015 Sponsorship Prospectus

Greetings!

On behalf of Michigan State Universities American Society of Mechanical Engineers (ASME), it is my pleasure to invite your company to join in partnership and help to offer developmental and networking opportunities for mechanical engineering students.



ASME Michigan State University

Primary Business Address
428 S. Shaw Lane, Room 2328K
Michigan State University
East Lansing, MI 48824-1226
Email: asme@msu.edu

We Welcome

The American Society of Mechanical Engineers or ASME at Michigan State University strives to offer several opportunities or events every year for our fellow students that range from networking with companies, to simply fun activities to get to know your fellow engineers. During the 2015-2016 school year however, we are trying to develop more ways for the students to become active in the industry and with ASME nationwide. These events include but are not limited to; junkyard wars, regional conference, networking or corporate recruiting events, industry shows, and general meetings. Through our events, we strive to offer our members opportunities to engage within the industry and help to prepare for their future careers.

It is through the help of corporate sponsorships that we are able to make our events possible. We offer the wide array of events, with room for growth and with the help of our current and future corporate sponsors. Through engaging in a partnership with ASME at Michigan State, employers will have the change for additional advertisement and face time with our mechanical engineering students. Our many networking events will allow for employers to get to know students and seek out the best and the brightest that MSU has to offer. In addition to simple networking opportunities, we will provide a resume book of all ASME members to companies who are interested. Furthermore, we are always looking to expand. If employers would like special events catered to their needs for recruitment we are happy to facilitate and create additional events to help out students and corporate sponsors.

Thank you for your interest in ASME and your dedication to continual improvement of the engineering community. We greatly look forward to working with you in the future.

Respectfully,

Taylor Forbush

President, American Society of Mechanical Engineers

Michigan State University

ASME Michigan State University

Primary Business Address
428 S. Shaw Lane, Room 2328K
Michigan State University
East Lansing, MI 48824-1226

Email: asme@msu.edu

Events

Every year ASME hosts various networking and development events for our members, some of which include information sessions, junkyard wars, regional conference, industry shows, as well as some fun events to get to know fellow students and corporate sponsors.

Regional Conference

Our biggest event of the year! Students will be able to be involved in workshops, networking with different employers and individuals from around the nation, and further develop their leadership abilities. It includes ASME chapters from Michigan, Ohio, Pennsylvania, West Virginia, and Ontario Canada. Location changes every year, last year it was in Toronto.

\$3,000

Junkyard Wars

This takes place in the spring during Engineering Week. Students come together in teams of four to five and are given a task to compete within a given time constraint. Each team is given the same supplies and instructions and then are given free reign to design whatever they need in order to complete a challenge. Previous years have included building a hovercraft that will carry a student a given distance, creating carts to carry a load through an obstacle course, and a catapult to throw eggs but also keep them safe on impact. We invite out corporate sponsors to join in the event to guide the teams and in the end judge them with MSU faculty.

\$2,000



ASME Michigan State University

Primary Business Address
428 S. Shaw Lane, Room 2328K
Michigan State University
East Lansing, MI 48824-1226

Email: asme@msu.edu

Events

Officer Polos

To show the unity between our officers we get polos for everyone to wear. We wear these to general meetings, conferences, and just around campus to help spread the word about our organization.

\$250

General Meetings

General meetings are our key components to building our organization through recruitment. These keep everyone informed about what is going on as well as introduce and inform students about various corporations and faculty members. We provide food and drink to most meetings as well as prizes if there is a design challenge.

\$1000 per semester

Broomball—MSU vs. U of M

The rivalry continues, a broomball game against the ASME group from that other school. It is a great way to team build as well as get to know fellow engineers within the state.

\$400



Detroit Autoshow

A popular event for journalists, enthusiasts, and professionals alike. ASME makes the trip down to Detroit every year as a great way for prospective engineers to explore one of Michigan's biggest engineering industries.

\$350

ASME Michigan State University

Primary Business Address
428 S. Shaw Lane, Room 2328K
Michigan State University
East Lansing, MI 48824-1226
Email: asme@msu.edu

Events

5th Annual Golf Outing

A great way to break up the school grind and have some fun with your fellow engineers. Spend a nice Saturday morning at Forest Akers Golf Course.

\$200

Intramural Sports Team

A great team building serious that can help break up the week. For example, in the past there has been a softball team, the sport is based on interest within the organization.

\$100



Community Service events

We attend various community service events throughout the year. This helps some of the costs associated with those events. In the past we attended impressions 5 which helped kids get excited about engineering and science, we also build a mock door for kids to go trick or treating at around Halloween, and last we helped volunteer at VEX Robotics high school event.

\$250

Design Challenges

Every year ASME releases a team design challenge which individual collegiate chapters attempt to solve and compete in. This past year the problem was to design a robot capable of crossing various terrain features while carrying a humanitarian payload. Design competitions provide a great way to exercise engineering skills in a way that traditional classes can't.

\$750

ASME Michigan State University

Primary Business Address
428 S. Shaw Lane, Room 2328K
Michigan State University
East Lansing, MI 48824-1226
Email: asme@msu.edu

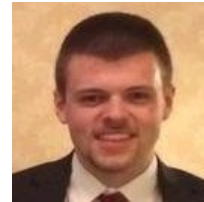
Officers

Thank you on behalf of all the officers

President: Taylor Forbush



Vice President: Kim Fortenberry



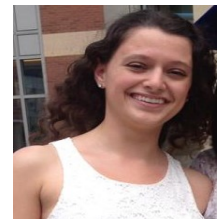
Treasurer: Andrew Hieber

Secretary: Leah Nonis



Social Chair: Brendan Fitzpatrick

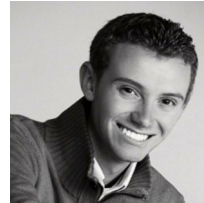
Community Relations: Zachery Sadler



Publicity: Mark VanPoppelen

Membership: Olivia Weprich

Academic Council: Kyle Hawkins



Webmaster: Amanda Pfutzenreuter

SEC Rep: Alexandra Morford



Freshman Rep: Jason Kim

Faculty Advisor: Dr. Steven Shaw

ASME Michigan State University

Primary Business Address
428 S. Shaw Lane, Room 2328K
Michigan State University
East Lansing, MI 48824-1226

Email: asme@msu.edu

